



PRODUCT CATALOGUE





I have spent over two decades working with India's leading product-based direct selling companies. As leader, we have risen from ordinary beginnings to extraordinary heights through dedication and professionalism.

Direct selling has become an immensely popular business model worldwide, and India holds tremendous growth potential. At Riwaglo, we are passionate about this industry and committed to helping you broaden your vision and transform your dreams into reality.

Our goal is to empower the women and youth of our nation by providing opportunities under one unified platform — Riwaglo Marketing Pvt. Ltd.

Understanding that a strong ecosystem is essential, Riwaglo provides fertile ground for partners to build businesses aligned with their passion — whether in fitness, wellness, beauty, agriculture, finance, technology, or education. We help our partners grow not only professionally but also in ways that positively impact their families and communities.

At Riwaglo, we are not just building enterprises; we are creating better livelihoods, connecting aspirations with reality, and fostering a community driven by the spirit of entrepreneurship.

Discover Riwaglo — your gateway to well-being, growth, and thriving communities

RADHA KRISHNA VASAM

Managing Director

RIWAGLO MARKETING PRIVATE LIMITED



Mission

Vision

**TO CREATE A
REVOLUTION AND
BECOME PEOPLES
FIRST CHOICE BY
2030**

**TO HELP PEOPLE LIVE
A HEALTHY AND
ECONOMICAL LIFE
OF FREEDOM IN THEIR
OWN WAY**



PRODUCT PORTFOLIO

Discover our comprehensive range of high-quality products across multiple categories — health, wellness, personal care, home care, and agriculture.

Each product is designed to deliver unmatched value, quality, and customer satisfaction.



INGREDIENTS

INGREDIENTS

Pomegranate

Tulsi

Moringa

Gingko Baloba

Alfalfa

Triphala

Acai Berry

Brahmi

Nano Curcumin

Milk Thistle

Mangosteen

Shatavari

Beet Root

Shilajit

Sea Buckthorn

Arjun Chal

Banaba

Ginseng

Grape Seed

Safed Musli

Dandelion



MIRACLE 21 JUICE



MIRACLE 21 JUICE

Miracle 21 Juice is a unique premium formula to complete all our daily health requirement with all necessary and important nutrition required for our health.

Recommended Usage: 30 ml per day in the morning.
Net Qty: 500 ml | MRP: ₹ 1349 | USP/Unit: ₹ 2.68

BENEFITS

- Rejuvenates the body
- Restores energy levels
- Reduces stress
- Strengthens the immune system
- Improves digestion
- Enhances overall well-being
- Supports healthy cellular function
- Powerful antioxidant
- Helps reduce fatigue and weakness
- May reduce the risk of developing chronic conditions
- Supports brain and memory function
- Helps with growth hormone deficiency

****Consult your physician if you are pregnant or lactating women or taking any other medicine.**

INGREDIENTS

Wheat Grass

Dandelion

Pippali

Ganoderma

Amlakai

Milk Thistle

Tulsi

Giloy

Aloe Vera

Soya Beej

Kali Mirch

Dil Seed

Nagarmotha

Pudina

Saunth

Marsh Mallow

DETOX CLEAN JUICE

INGREDIENTS



DETOX CLEAN JUICE

Detoxifying the body is beneficial for everyone. By cleansing the system, the body naturally releases excess toxic fluid—much of which contains unwanted fat stored as a toxin reservoir. A cleaner body supports better health and improved vitality.

Recommended Usage: 30 ml per day in the night.

Net Qty: 500 ml | MRP: ₹ 900 | USP/Unit: ₹ 1.8

BENEFITS

- Improves the absorption of nutrients
- Assists in complete detoxification
- Mild on bowel system Clean
- Treats hyper acidity It treats Flatulence Chives(intestinal gases)
- Helps in reducing anorexia Detoxification
- Acts as a stimulant, carminative and antacid
- Strengthens digestive system
- Helps to relieve acidity and ulcers
- Useful in relieving gastritis ,abdominal colic, diarrhea, dysentery and abdominal bloating.
- An excellent laxative that prompts increased bowel action.

****Consult your physician if you are pregnant or lactating women or taking any other medicine.**

INGREDIENTS

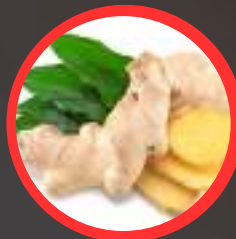
Arjuna



Allium Sativum (Garlic)



Zingiber Officinale (Ginger)



Citrus Lemon



Apple Vinegar



Natural Honey



HEART CARE JUICE





HEART CARE JUICE

Heart Care Juice is a remarkable blend that supports heart health by lowering cholesterol and blood pressure levels.

Recommended Usage: 10ml twice per day.

Net Qty: 500 ml | MRP: ₹ 1495 | USP/Unit: ₹ 2.99

BENEFITS

- Lowers Cholesterol
- Lowers Blood Pressure
- Improves Blood circulation
- Strengthens Heart Muscle
- Enhances Cardiac Function
- Packed with Anti-Oxidants
- Promotes overall cardiac wellness
- Natural addition to your diet

INGREDIENTS

RIWA SLIM

RIWA SLIM

KURVEDIC POWDER

Supports:

- Managing Weight
- Improves Gut Health
- Relieves Constipation
- Relieves Acidity, Gas & Bloating

FOR MEN & WOMEN

200 GM
DIETARY SUPPLEMENT

INGREDIENTS

Zingiber Officinale (Ginger)

Cuminum Cyminum

Coriandrum Sativum

Trigonella foenum-Graecum

Piper Nigrum

Black Salt

Terminalia Chebula

Linum usitatissimum

Plantago Ovata

Operculina turpethum

Elettaria Cardamomum

Nigella Sativa

Foeniculum Vulgare

Polygonatum Verticillatum

Himalayan Pink Salt

Cinnamomum tamala

Cassia Angustifolia

Mentha

Myristica

Curcuma Longa

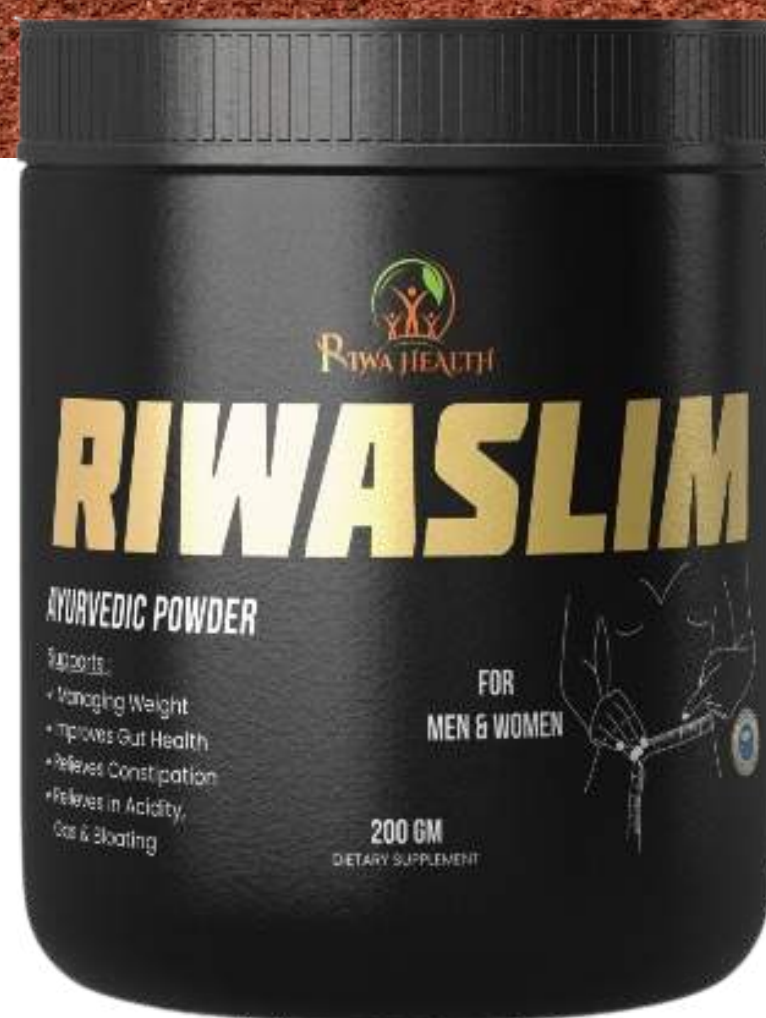
Cichorium intybus

Terminalia bellirica

Phyllanthus emblica

Cinnamomum Verum

WEIGHT LOSS



RIWA SLIM

Riwaslim is a thoughtfully crafted blend of ayurvedic herbs and botanicals. When paired with a balanced diet and exercise, it empowers individuals to achieve weight loss goals naturally and substantially.

Recommended dosage: 1 Tablespoon (5 gms) with Lukewarm water at bedtime

Net Qty: 200 gms | MRP: ₹ 1326

BENEFITS

- Supports Healthy Weight Management
- Enhances digestion
- Enhances Metabolism, detoxification & appetite Control
- Empowers to lose weight naturally and substantially

KIDS GLO

Colostrum



Ashwagandha



Omega Fatty Acids



Fructo Oligo Saccharide



Malt extract



Cocoa Powder



Sucrose



Pea Protein



Rice Protein



Soya Protein Isolate



Whey Protein Concentrate



Skimmed Milk Powder



Maltodextrin



Vitamins and Minerals



INGREDIENTS



KIDS GLO PROTIEN POWDER

Kids Glo protein powder is a complete and balanced nutrition supplement for kids. It has a perfect blend of 33 vital nutrients. It supports brain, physical development, for overall growth and immunity. 100% vegetarian source. It's a premium blend of whey, soya, rice and milkshake protein with DHA, Iron and Iodine.

Recommended Usage: 1 Scoop with a glass of lukewarm water or milk from age of 6 to 12 years

Net Qty: 200 gms| MRP: ₹ 650

BENEFITS

- Supports overall development for children
- Brain and physical development
- Supports health neural communication
- Supports bone building in children
- Supports immune system strength
- Supports healthy vision
- Helps in digestion
- Prevents low blood sugar
- Prevents jaundice

INGREDIENTS



ORTHO OIL

INGREDIENTS



ORTHO OIL

Ortho Oil is a unique blend of natural ingredients carefully selected to provide effective relief from joints and muscular discomfort. It helps in ortho, muscular pains like, neck pain, back pain, knee pain, ankle pain, sprains, spine, elbows, shoulder, joints, etc.,

Recommended Usage: Take some drops of Ortho Oil on your palm and massage gently on the affected areas or as directed by the physician.

Net Qty: 60 ml | MRP: ₹ 299

BENEFITS

- Effective relief from Muscular discomfort
- Helps in Ortho related pains
- Helps in Back pain
- Relief from Knee Pain, Sprains, Spine, elbow and Shoulder etc.,

INGREDIENTS

Glycolic Acid



Dextrin



Vitamin C



Bamboo Vinegar



Vegetable Fiber



Pure Silica



Pearl Powder



Wood Vinegar



Tourmaline



Chitosan



INGREDIENTS

DETOXIGLO FOOT PATCHES





DETOXIGLO FOOT PATCHES

Detox foot patch are over-the-counter products that claim to help flush toxins from your body.

To use Detoxiglo Foot Patches, clean and dry your feet, peel the backing from the adhesive sheet, place the patch in the center of the adhesive, and firmly attach it to the sole of your foot, usually the arch area

Net Qty: 10 Patches | MRP: ₹ 1199



BENEFITS

Detoxiglo Foot Patches may helps in

- Boosts your immune system
- Ease Headaches
- Reduce Cellulite
- Ease symptoms of depression
- Improve your life with diabetes
- Help you sleep better
- Increase weight loss
- Get rid of parasites
- Lowers your blood pressure

INGREDIENTS

Potassium



Calcium



Sodium



Magnesium



Sulfate



Chloride



CONCENTRATED MINERAL DROPS

INGREDIENTS



CONCENTRATED MINERAL DROPS

Concentrated minerals help to refill the deficiency of minerals in no time. It prevents heat stroke and rehydrates the body. Boost energy & hydration helps to function efficiently.

Recommended Usage: Use 5-6 drops of CMD with 1 ltr of water and consume as required.

Net Qty: 60 ml | MRP: ₹ 1099

BENEFITS

- Bones & Teeth Health
- Heart & muscle function
- Oxygen transport and blood health
- Immune support system
- Nervous system health
- Hormonal Balance
- Energy Production
- Fluid Balance and Detoxification

INGREDIENTS



INGREDIENTS

ACIDITY RELIEF DROP



ACIDITY RELIEF DROP

Acidity relief drops are a natural remedy designed to help manage and soothe symptoms of acid reflux, heartburn, and general gastric discomfort.

Recommended Usage: Use 10 drops of Acidity relief Drop with a glass of warm water and consume as required.

Net Qty: 30 ml | MRP: ₹ 340



BENEFITS

- Neutralizes Acidity
- Eases discomfort caused by Gas and indigestion
- Gentle on the stomach
- Soothes acid reflux
- Helps reduce general gastric discomfort
- Soothes heart burn

INGREDIENTS



INGREDIENTS



PANCH TULSI DROPS



PANCH TULSI DROPS

It is widely valued in traditional Ayurvedic medicine for their numerous health benefits. This herbal formulation is known for its strong antioxidant, anti-inflammatory, and antimicrobial properties.

Recommended Usage: Use 10 drops of Panch Tulsi Drops with a glass of Hot water or coffee or Tea and consume as required.

Net Qty: 30 ml | MRP: ₹ 299

BENEFITS

- Boosts immunity
- Strong anti oxidant, anti inflammatory
- Helps in ailments like respiratory, colds, coughs.
- Supports heart health
- Regulates blood sugar levels
- Gives respiratory comfort.



INGREDIENTS

Boswellia Serata

Dev Daru

Haldi

Ashwagandha

Glucosamine

Moringa Oleifera

Saunth

Rasnapan

Kiwagle
CREATE FUTURE

RIWA JOINT GUARD

FOR HEALTHY JOINTS

An Ayurvedic Preparation

90gm

RIWA JOINT GUARD

INGREDIENTS



RIWA JOINT GUARD

Riwa Joint Guard, especially glucosamine, can offer several benefits for joint health, including reducing pain, improving range of motion, and supporting cartilage repair. They may also help with inflammation and overall joint function, making them a potential option for individuals experiencing joint discomfort or arthritis

Recommended Usage: Use one table spoon of Riwa Joint Guard with a glass of Hot water

Net Qty: 90 gms | MRP: ₹ 1599

BENEFITS

- Reduced Joint Pain
- Improved Range of Motion
- Cartilage Repair and Support
- Reduced Inflammation
- Overall Joint Function
- strengthens the ligaments

INGREDIENTS



Jamun



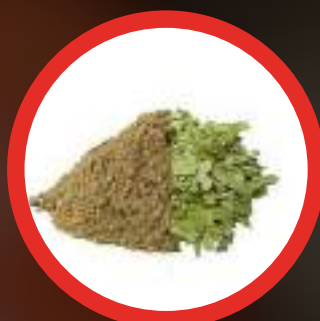
Moringa



Amla



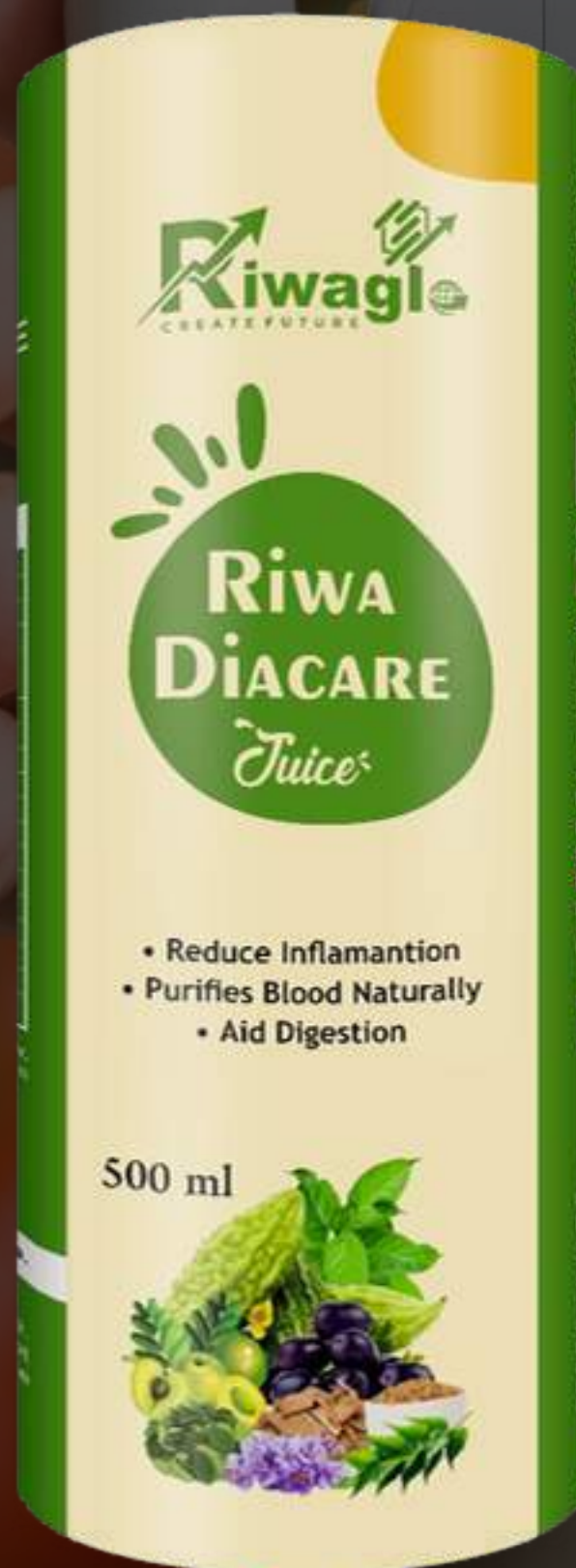
Karela



Gurmar



Vijaysar



Methi



Neem



Banaba

INGREDIENTS

RIWA DIACARE 500 ML

BENEFITS



Riwa Diacare is a premium herbal formulation developed to help maintain healthy blood sugar levels naturally while improving overall wellness. Designed for long-term use, it supports sugar balance, enhances metabolism, and promotes sustained energy throughout the day.

This health tonic combines traditional herbal wisdom with modern quality standards, making it a safe and reliable choice for those looking to adopt a natural approach to daily sugar and wellness management.

Usage

Take 15-20 ml twice daily with an equal amount of water, preferably 30 minutes before meals, or as directed by your healthcare professional.

- Helps regulate healthy blood sugar
- Supports digestion and metabolism
- Reduces excess sugar cravings
- Boosts energy and stamina
- Promotes overall well-being

Net Qty: 500 ML | MRP: ₹ 1499

INGREDIENTS

INGREDIENTS

Sunthi

Tulasi

Talish Patra

Vasaka

Sathi

Pudhina

Kantakari

Mulethi

Banafsha



🔍 www.Riwaglo.com 🎤



RIWA RESPORELIEF

Riwa RespoRelief natural and effective formulation enriched with time-tested Ayurvedic herbs to provide quick relief from cough, cold, sore throat, and respiratory congestion. Blended with Kantakari, Tulsi, Mulethi, Vasaka, and Pudhina, this syrup acts as a powerful expectorant, soothes throat irritation, and supports easy breathing. Unlike chemical-based syrups, it is non-drowsy, safe for long-term use, and suitable for both adults and children.

RECOMMENDED DOSAGE

ADULTS: 1-2 TEASPOONS, 2-3 TIMES DAILY, CHILDREN: ½-1 TEASPOON, 2-3 TIMES DAILY (OR AS DIRECTED BY THE PHYSICIAN)

BENEFITS

- Provides fast and long-lasting relief from cough & cold
- Helps loosen and expel mucus naturally
- Soothes throat irritation and hoarseness
- Reduces respiratory congestion and eases breathing
- Strengthens the body's natural immunity against seasonal infections
- 100% Herbal, non-drowsy, and safe for long-term use

Net Qty: 200 ML | MRP: ₹ 299

INGREDIENTS



Grape stem



Polygonum



Blue Berry



Apple Stem



Astragali radix



Acai Berry



Flax Seed



Orange Extact



INGREDIENTS

“Root-Level Healing for Whole-Body Wellness.”



Improves
Digestion

Improves
Brain Function

Strengthening
Bone & Teeth

Promote
Healthy Heart

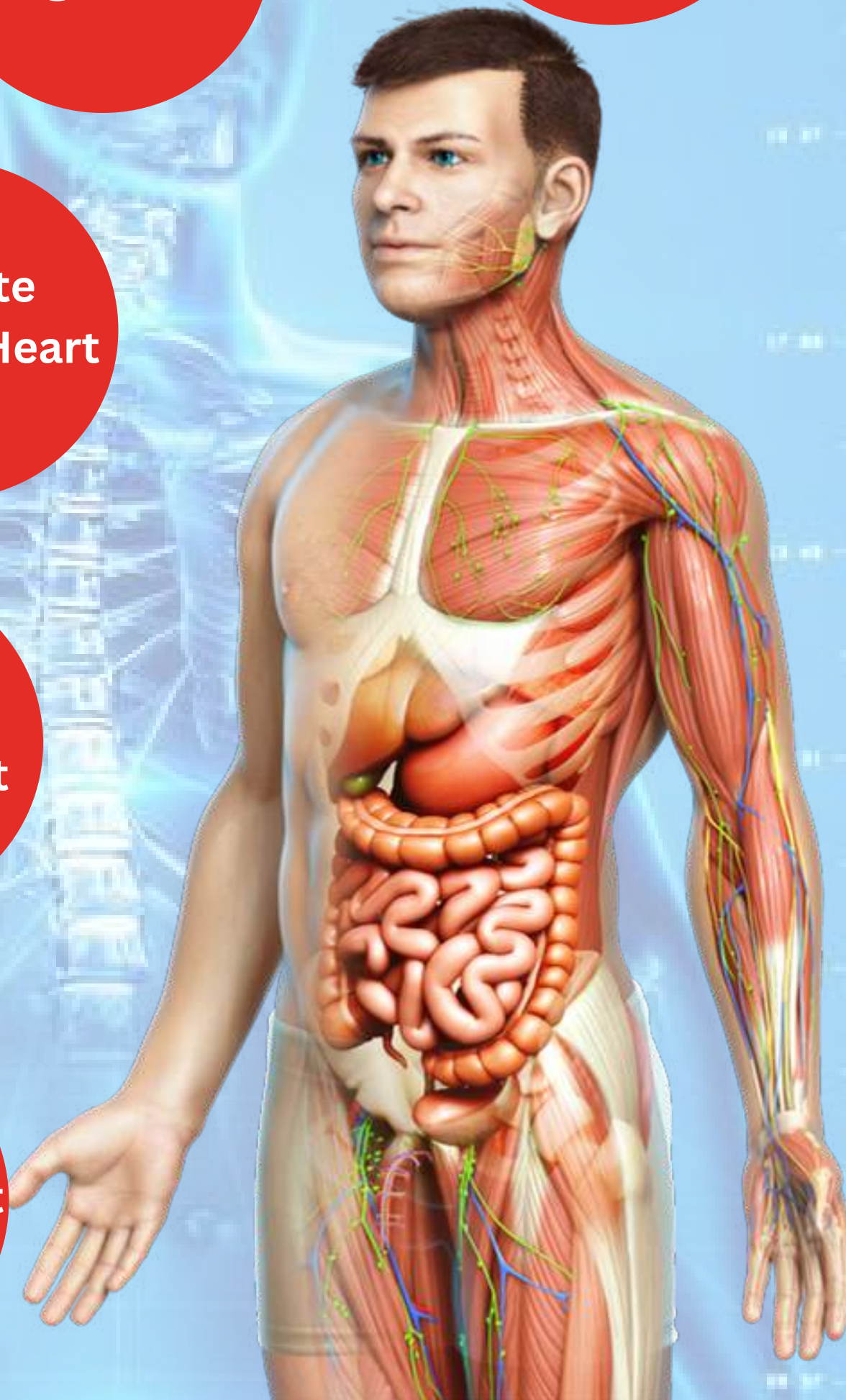
Promotes
Strong Blood
Vessels

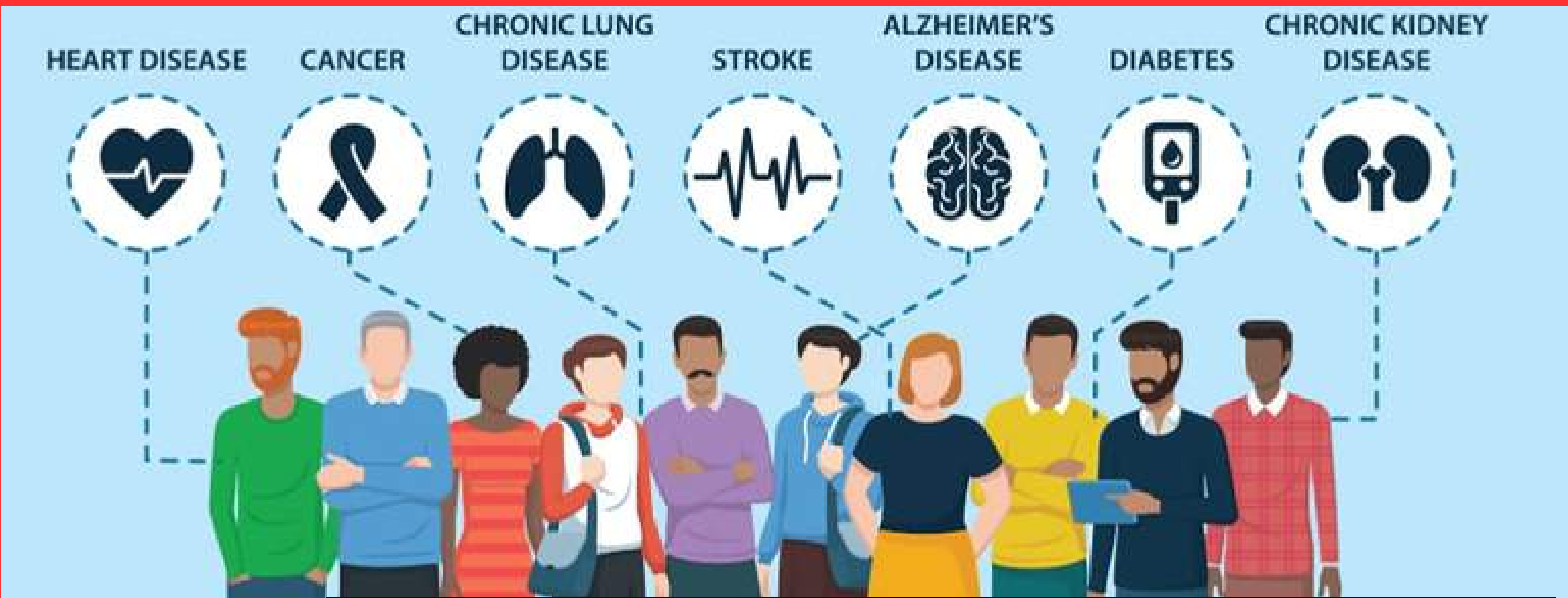
Improve
KidneyHeart

Lower
Cholesterol
Levels

Protest Aganist
Cancer

Treats UTI
Infections





“Helping you fight and recover from more than 200 chronic illnesses.”



Diabetes	Kidney Problems	Parkinson's Disease	Constipation
Acne Pimples	And Many More...	Haemorrhoids	Eczema
Bad Cholesterol	Spinal Cord Injury	Skin Problems	Multiple Sclerosis
Stroke	Blood Pressure	Alzheimer's Disease	Pneumonia
Menstrual Pain	Cancer	Sickle Cell Anaemia	Uric Acid
Ulcers	Infertility	Joint Pain	Arthritis
Liver Problems	Brain Injury	Heart Problems	Hepatitis
Sexual Weaknesses	Asthma	Poor Memory	Eye Problems
Epilepsy	Prostate Issues	Gastric Issues	Rheumatism
Back Pain	Dental Problems	Down Syndrome	Allergies
		Fibroids	



RIWAGLO STEM CELL POWDER

BENEFITS

Riwaglo Stem cell Powder introduces its most advanced formulation yet – Advance Stem Cell Powder – Platinum Edition. This premium dietary supplement blends cutting-edge stem cell extracts, super antioxidants, and nutrient-rich botanicals to support skin rejuvenation, immunity, vitality, and overall wellness. Specially designed to combine the best of modern science with natural superfoods, each 3 g sachet delivers a balanced and powerful formulation that stands out in its category.

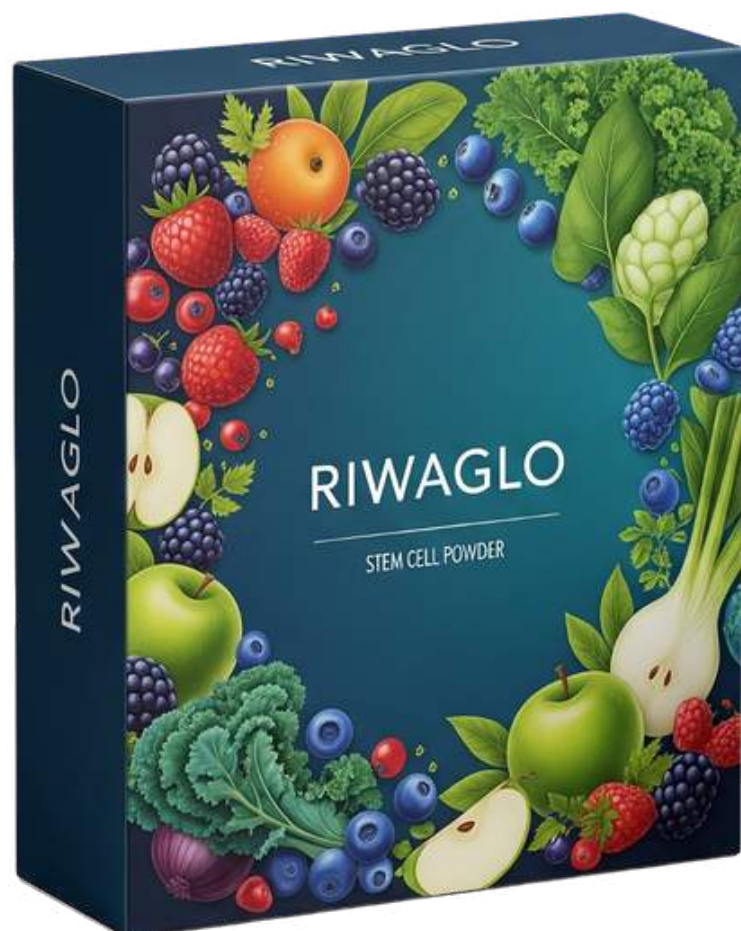
- Stem Cell Support & Regeneration
- Powerful Antioxidant Defense
- Skin & Beauty Enhancement
- Boosts energy and stamina
- Immunity & Energy Boost
- Balanced Wellness Formula

Recommended Dosage

Take 1 sachet (3 g) daily, best taken sublingually (under the tongue) for faster absorption.

Alternatively, mix with 150–200 ml of water/juice and consume on an empty stomach in the morning or before bedtime.

Disclaimer: This is a dietary supplement, not a medicine, and is not intended to diagnose, treat, cure, or prevent any disease. The images shown in this catalogue are for educational and illustrative purposes only.





GLO LEAF TEA

Glo Leaf Tea: The Radiant Brew

Introducing Glo Leaf Tea, the exquisite, radiant brew designed to illuminate your senses with every sip. Our expertly crafted blends deliver a unique warmth and an inner glow that transforms a simple moment into a cherished ritual. With each cup, you'll discover a world of rich, aromatic flavor. Our premium tea leaves are carefully selected to create a perfectly balanced and velvety smooth experience, inviting you to pause, breathe, and savor the moment.

The very essence of our brand is captured in our philosophy: "Glow In Every Sip." This isn't just tea—it's an invitation to find your light, refresh your spirit, and let the glow begin.

BENEFITS

- Rich in Antioxidants
- Supports Heart Health
- Enhances Brain Function and Alertness
- Aids Digestive Health
- Boosts the Immune System

Net Qty: 250 gms | MRP: ₹ 249



SHAIN GLO(SHAMPOO)

Riwaglo Shain Glo Natural Shampoo is a powerful blend of ancient Ayurvedic herbs like Amla, Neem, Bhringraj, Shikakai, Reetha, Tulasi, Mehendi Patra, and Aloe Vera.

This gentle yet effective formula nourishes the scalp, strengthens hair roots, and promotes natural hair regrowth.

Infused with the goodness of herbal extracts, it helps reduce hair fall, control dandruff, and delay premature greying.

The natural cleansing action of Reetha and Shikakai keeps hair fresh, soft, and manageable without harsh chemicals.

Regular use leaves your hair thicker, shinier, and healthier, making it the perfect daily care shampoo for strong and lustrous hair.

HOW TO USE: APPLY ON WET HAIR, GENTLY MASSAGE INTO SCALP AND HAIR, LEAVE FOR 2-3 MINUTES, THEN RINSE THOROUGHLY. USE 2-3 TIMES A WEEK FOR BEST RESULTS.

BENEFITS

- Stimulates Hair Regrowth
- Strengthens Hair Roots
- Reduces Hair Fall
- Delays Premature Greying
- nourishes the scalp, strengthens roots, and supports natural regrowth.

Net Qty: 250 gms | MRP: ₹ 294



RIWAGLO JASMINE HAIR OIL – PURE NOURISHMENT, LASTING FRAGRANCE

Experience the timeless beauty secret of jasmine-infused care with Riwaglo Jasmine Hair Oil. Enriched with natural oils and the soothing essence of jasmine flowers, this hair oil deeply nourishes your scalp, strengthens your roots, and leaves your hair silky, smooth, and beautifully fragrant. Perfect for all hair types, it helps restore shine, improve texture, and keep your hair healthy from root to tip.

Recommended Usage: To use, take a small amount of oil in your palm and gently massage it into your scalp using circular motions. Spread the oil evenly along the length of your hair to enhance shine and smoothness. Leave it on for at least 1-2 hours or overnight for deeper nourishment, then wash thoroughly with a mild shampoo and follow with a conditioner for best results.

Net Qty: 200 ml | MRP: ₹ 249

BENEFITS

- Deep Nourishment
- Promotes Hair Growth
- Adds Shine & Smoothness
- Reduces Frizz & Dryness
- Strengthens Hair
- Adds Shine and Volume.



RIWAGLO ALMOND HAIR OIL

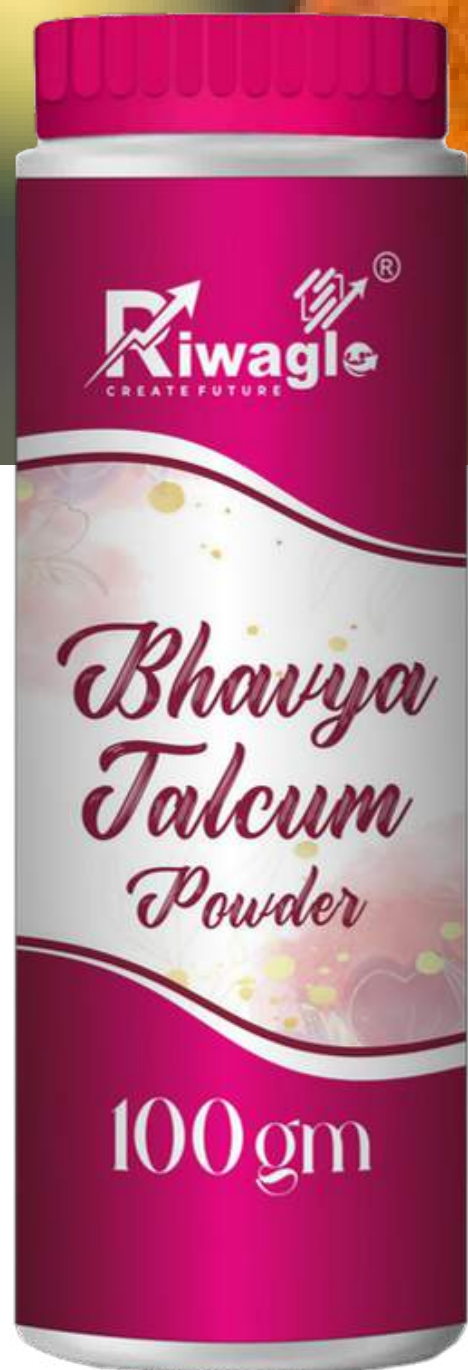
Give your hair the care it deserves with Riwaglo Almond Hair Oil, enriched with pure almond goodness to deeply nourish and strengthen your hair from root to tip. Packed with essential vitamins and natural moisturizers, this lightweight yet powerful oil helps restore shine, improve hair texture, and reduce breakage, leaving your hair healthier, softer, and smoother with every use. Ideal for all hair types.

Recommended Usage: Take a small amount of oil in your palm and gently massage it into your scalp using circular motions. Spread the oil evenly through the lengths of your hair to enhance softness and shine. Leave it on for at least 1-2 hours or overnight for deep nourishment. Rinse thoroughly with a mild shampoo and follow with conditioner for best results.

BENEFITS

- Strengthens Hair Roots
- Reduces Hair Fall
- Reduces Split Ends
- Nourishes the Scalp
- Strengthens Hair
- Adds Shine and Volume.

Net Qty: 200 ml | MRP: ₹ 249



BHAVYA TALCUM POWDER

Talcum powder gives relief in summer especially as it absorbs sweat and moisture from the body and there is less irritation on skin in scorching heat of summer. Due to humidity and sweating skin is prone to many issues such as red rashes, patches, moisture etc this leads to irritation on skin, talcum powder helps to absorb all the sweat throughout the day. And makes you feel comfortable and relax. It consists of fragrances that relieve from bad odour of body due to sweating. Talcum powder makes your skin feel soft and fresh throughout whole day.

Recommended Usage: After bathing, sprinkle a small amount of Bhavya Talcum Powder onto your palm and gently apply it to your neck, underarms, and other body areas prone to sweat. Spread evenly on clean, dry skin for all-day freshness and smoothness. Reapply whenever needed for enhanced comfort and fragrance.

BENEFITS

- Long-lasting Freshness
- Absorbs Sweat & Moisture
- Prevents Body Odor
- Soft & Smooth Skin
- Gentle for Daily Use
- Comfort in All Seasons.

Net Qty: 100 Grm | MRP: ₹ 149



RED ONION HAIR OIL

Let your hair breathe and shine by treating them with the gentleness of our Red Onion Extract Hair Oil. Healthy hair often looks healthy and shiny, when they are healthy from the roots. This special oil optimizes your hair growth cycle, prevents breakage and thinning. The Red Onion Extract Hair Oil is the magic option your hair needs

Recommended Usage: Apply Red Onion Extract Hair Oil on your scalp and massage with fingertips using a circular motion. Apply the oil left on your palms to your hair. Cover with a towel or shower cap and leave on overnight. The next day, shampoo hair while dry. Rinse thoroughly. For best results apply twice a week.

Net Qty: 200 ml | MRP: ₹ 559

BENEFITS

- Promotes Hair Growth
- Reduces Hair Fall
- Treats Dandruff
- Nourishes the Scalp
- Strengthens Hair
- Adds Shine and Volume.



RED ONION HAIR MASK

Give yourself a hair spa with this transforming Red Onion Extract Hair Mask. Maintaining hair texture or restoring damaged hair to its original condition in a tall order. This is why we created this special Red Onion Hair Mask that unclogs blocked roots and manages scalp infections while healing the hair from the inside out. This is a 100% ayurvedic formula that helps heal brittle, and weak hair, improves tensile strength, and repairs damaged hair.

Recommended Usage: Wash your hair thoroughly. Towel dry your hair. Take a portion of Red Onion Hair Mask and apply on the strands, from mid to bottom. Avoid applying directly to the scalp. Keep it for 20 minutes and rinse off with lukewarm to cold water.

Net Qty: 100 gms | MRP: ₹ 490

BENEFITS

- Promotes Hair Growth
- Reduces Hair Fall
- Treats Dandruff
- Nourishes the Scalp
- Strengthens Hair
- Adds Shine and Volume.





RED ONION HAIR SHAMPOO

Onion is a great source of antioxidants. Their antimicrobial nature treats dandruff, irritation and other skin problems. The Sulphur in onions helps to maintain thick hair, reduce hair fall and boost hair growth. High sulphur levels also help prevent hair loss and strengthen hair follicles.

Recommended Usage: Apply Red Onion Extract Hair shampoo and massage with fingertips using a circular motion. Apply the shampoo left on your palms to your hair. Rinse thoroughly. For best results apply twice a week.

Net Qty: 300 ml | MRP: ₹ 830

BENEFITS

- Promotes Hair Growth
- Reduces Hair Fall
- Treats Dandruff
- Nourishes the Scalp
- Strengthens Hair
- Adds Shine and Volume.



RIWA TOUCH HAND WASH

Riwacare Riwatouch hand wash is a rich lathering liquid cleanser with mild, yet effective skin cleansers. Its conditioning and moisturizing agents smoothen and protect your skin and maintain the natural pH balance. It refreshes your skin every time you cleanse, leaving your skin softer and smoother. Riwa Touch protects hands from germs and keeps them hygienic.

Recommended Usage: WET hands with water. Apply Riwa Touch hand wash, RUB for at least 20 seconds (Palms /Back of hands/Between fingers/Back of fingers /Thumbs /Fingertips /Wrists) RINSE with water. DRY with paper towel.

Net Qty: 300 ml | MRP: ₹ 175

BENEFITS

- Prevents infection
- Reduces the spread of diseases
- Protects vulnerable populations
- Reduces antibiotic resistance
- Helps prevent food poisoning and diarrhea
- Reduces the number of people getting sick
- Helps prevent infection



DENTGLO TOOTH PASTE

Dentglo Toothpaste is not just another toothpaste on the shelf; it represents a breakthrough in oral health. With its unique formulation, Dentglo offers special protection for both gums and teeth, ensuring comprehensive oral hygiene. Our toothpaste stands out due to its blend of natural ingredients, each chosen for its specific benefits in promoting oral health.

Recommended Usage: Apply a pea-sized amount to a toothbrush, preferably with soft bristles, and gently brush back and forth at a 45-degree angle to the gums for at least two minutes, twice a day

Net Qty: 150 gms | MRP: ₹ 150

BENEFITS

- It helps remove plaque
- Fights tooth decay and gum disease
- Freshens breath,
- Helps strengthen tooth enamel





GLO RIVEL FACE SERUM

Face serums are a vital step in skincare because they deliver potent, targeted ingredients directly to the skin. Unlike creams or lotions, serums are lightweight and highly concentrated, making them more effective for addressing specific skin concerns.

Recommended Usage:

To effectively use a face serum, begin with a cleansed and toned face. Apply a pea-sized amount of serum to your fingertips and gently massage it into your skin, paying attention to areas of concern. Allow the serum to absorb fully before moisturizing, and if used in the morning, follow up with sunscreen

Net Qty: 30 ml | MRP: ₹ 799

BENEFITS

- Including enhanced hydration
- Targeting specific skin concerns
- Improves overall skin texture and appearance.
- Provide anti-aging effects
- Brighten the complexion
- Protect against environmental damage



RIWAPURE WITH ALOEVERA & SAFFRON

Riwapure bathing soap is a unique skin cleanser that naturally lightens and brightens your complexion besides nourishing, Nurturing and pampering your skin. Enriched with skin brightening saffron and licorice, and soothing Aloe Vera and Vetiver. Riwapure herbal fairness soap constitutes a perfect beauty bar for dull and exposed skin.

Recommended Usage: To properly use bathing soap, first wet the soap and create a lather. Then, apply the lather to your body, working from the top down, and avoid using a loofah or washcloth directly with the soap. Rinse thoroughly with lukewarm water and ensure the soap is kept dry between uses

Net Qty: 100 gms | MRP: ₹ 89



BENEFITS

- Includes hydration
- Brightening
- Anti-aging properties
- cooling and soothing properties
- Calms irritated skin
- Antioxidants and brightening
- Effects Radiant complexion



PREMIUM LUXURIA CLEANSING BAR



Premium Luxuria Cleansing Bar is with the unmatched fragrance of Oudh (agarwood) with immense skin nourishing impact of Shea Butter endow a luscious and luxuriant touch to Premium Luxuria Cleansing Bar whose lingering perfume keeps you energized all day. Let your skin embrace the suppleness offered by Jojoba Oil and smoothness of Olive Oil while Premium Luxuria Cleansing Bar gently cleanses the same, enhancing your natural growth and skin radiance.

Recommended Usage: To properly use bathing soap, first wet the soap and create a lather. Then, apply the lather to your body, working from the top down, and avoid using a loofah or washcloth directly with the soap. Rinse thoroughly with lukewarm water and ensure the soap is kept dry between uses

Net Qty: 100 gms | MRP: ₹ 89

BENEFITS

- Cleansing the skin
- Removing dirt and bacteria
- Provides a refreshing experience.
- Moisturizing properties
- help with skin problems like acne
- Aromatherapy benefits.



RIWAGLO HAND MADE SOAPS

Our Soaps is a unique combination of herbs that cleanses the skin of dirt and grimes and protects the skin simultaneously. It helps soothe the skin of any rashes and pimple breakouts and suitable for all skin types.

Recommended Usage: To properly use bathing soap, first wet the soap and create a lather. Then, apply the lather to your body, working from the top down, and avoid using a loofah or washcloth directly with the soap. Rinse thoroughly with lukewarm water and ensure the soap is kept dry between uses

Net Qty: 125 gms | MRP: ₹ 140

BENEFITS

- Cleansing the skin
- Removing dirt and bacteria
- Provides a refreshing experience.
- Moisturizing properties
- Help with skin problems like acne
- Aromatherapy benefits.



RIWA SHINE DISH WASH LIQUID

Homeglo Riwa Dish Wash liquid effectively cuts through and dissolves most stubborn grease and dried food from your utensils, and kitchenware leaving them sparkling clean, free from any harmful residue. Highly concentrated and environment friendly, free from harmful bleaching agents, harsh chemicals and acids. Its gentle and free on hands.

Recommended Usage: Prep Your Sponge. Dampen your sponge with warm water, then wring it out and add a few drops of Shine dish liquid directly onto the soft side of the sponge. Work from small to big and Air -dry post wash.

Net Qty: 500 ml | MRP: ₹ 230

BENEFITS

- Effective Grease Removal
- Sanitization
- Gentle on Hands
- Pleasant Fragrance
- Eco-friendly Options
- Versatile Use



RIWA BRIGHT DETERGENT LIQUID

Riwa Bright Detergent Liquid is ideal for both hand and machine laundry. Our laundry liquid is a reliable choice, the main washing ingredient is an atomic surface-active agent, effectively tackling non-fatty dirt. Additionally, it contains co-washing agents, builders, and anti-redeposition components. Keep your clothes fresh and clean with your laundry liquid.

Use on all types of clothes, cotton, synthetic, chiffon, georgette, jeans, sheets, baby clothes etc., (Not recommended for use on wool and silk)

Net Qty: 500 ml | MRP: ₹ 399

BENEFITS

- Easy to use
- Effective stain removal
- Dissolves quickly
- Gentle on fabrics
- Suitable for all water temperatures
- Less residue
- Gentle on hands
- Environmental friendly options



RIWA REFLECT FLOOR CLEANER

Riwa Reflect Floor Cleaner effectively cleans floors, counter tops, sinks, bathroom floors, nappy buckets etc. A Powerful formula that prevents & kills household germs and odor causing bacteria. Leaves a pleasant fragrance.

Recommended Usage: Dilute the product with water as required and gently mop the surface. Dilution (Product Water Ratio)

Net Qty: 500 ml | MRP: ₹ 215

BENEFITS

- Improved Hygiene
- Enhanced Appearance
- Extended Floor Lifespan
- Pleasant Fragrance
- Reduced Allergens
- Time and Cost Savings
- Reduced Risk of Slips and Falls
- Safe for Various Surfaces
- Improved Indoor Air Quality
- Versatility



RIWA CLEAN TOILET CLEANER

Riwa Clean Toilet Cleaner is suitable for all types of Toilets. Its super thick gel prevents invisible germs from attacking your toilet and protects you and your family from infectious diseases. Riwa Clean Toilet Cleaner Cleans and freshens your toilet completely and leaves it with a pleasant smell.

Recommended Usage: Position the nozzle directly under the rim of the toilet bowl and pour all around the bowl, while squeezing the bottle to dispense the liquid evenly. Let the liquid spread from rim to U-bend and leave for 20 minutes. Brush the toilet lightly and flush.

Net Qty: 500 ml | MRP: ₹ 215

BENEFITS

- Kills 99.9% germs
- Washroom hygiene
- Better Cleaning
- Stain removal
- Easy to use
- Neutralises odours
- Promotes Hygiene
- Eliminates bacteria & germs
- In Cistern toilet cleaning block



RIWA MAGIC CLEAN

Riwa Magic Clean Multipurpose Cleaning liquid is one of its kind product formulated to remove various stains from a wide variety of surfaces such as floor, leather, Fabric, and walls. Removes rigid pickle stains and marks on the walls. Our Riwa Magic Clean will wipe up the grim without tough scrubbing or leaving any residue behind.

Recommended Usage: Unlock the knob and spray as mist over the surface. Wipe out with a dry cotton cloth to get complete clean and shine across floors, leather, fabrics and walls etc.,

Net Qty: 200 ml | MRP: ₹ 210

BENEFITS

- Improved Hygiene
- Enhanced Appearance
- Extended Floor Lifespan
- Pleasant Fragrance
- Reduced Allergens
- Time and Cost Savings
- Reduced Risk of Slips and Falls
- Safe for Various Surfaces
- Improved Indoor Air Quality
- Versatility



KISSAN MITRAA GOLD GRANULES

Kisan Mitra Gold is a new product made naturally. It is formulated with unique ingredients like humic acid, fulvic acid, amino acids, seaweed and protein hydrolytes.

Improves soil texture, makes root stronger & deeper, reduces the use of fertilizers by 40%, regulates & improves the various stages of the plant, contributes to the quality and high yield of the crop.

Dosage: 2 -5 Kg /1 acre.

Crops: Rice, Cotton, Chilli, Tomato, Sugarcane, Onion, Wheat, Oil Palm, Mango, etc. Mode of application: Good results can be achieved by reducing the use of chemical fertilizers by 50% at appropriate time and in appropriate amount depending on the crop, keeping in view the fertility index of the soil and irrigation water

Net Qty: 2 Kgs | MRP: ₹ 499

Net Qty: 5 Kgs | MRP: ₹ 1350



KISSAN MITRAA WONDER

Kisan Mitra Wonder is an organic product made naturally. It helps the plant to grow fast and healthy. Improves resistance to pests in all types of crops and helps the plant to grow healthily

Kissan Wonder cannot be used with Weeds in combination

Dosage: 1.5-2.5ml/1 liter of water (or) 250ml per acre.

Crops: Cotton, chilli, tomato, rice, millet, green gram, curry, brinjal, greens, mango, mari gold, jasmine, chrysanthemum, rose, and vegetables etc

Net Qty: 250 ml | MRP: ₹ 1399



KISSAN MITRAA CROP GUARD

Kissan Mitraa Crop Guard is a patented organic product formulated with state-of-the-art technology.

By using it on crops, it helps to effectively prevent pests such as blast, leaf spot, gray leafhopper, leafhopper etc. in different types of crops and get high quality yield.

Dosage: 1g/1 liter of water (or) 100g/1 acre

Net Qty: 100 gms | MRP: ₹ 1440



KISSAN MITRAA GLOD GROWTH

Gold Growth is naturally derived organic product, it helps the photosynthesis in plants and entire growth of the plant. it regulates the enzymatic activities and get better yield. It helps in the healthy root system and vegetative growth of the crop.

Dosage: 2.5 ml/1 liter of water

Net Qty: 250 ml | MRP: ₹ 769



KISSAN MITRAA NUTRI MAX

NUTRI MAX is a composition of essential micronutrients play very significant role for physiological growth and bio chemical metabolism of plants. Advantages of NUTRIMAX Application : Ensure the qualitative improvement and increase in the crop yield by 20-25%. Induces flowering disease resistance and drought resistance in the plant. Develop the healthy root system and wider green leaves with max chlorophyll content.

Induces the uptake translocation of N.P.K elements in the plant. Efficient photosynthesis and induces tillering effects in the cereal crops. Prevent flower and fruit droppings. Increase oil content in the oil seeds and sugar content in the sugarcane and fruit and protein content in pulses. Increase the size and weight of fruit and seeds in pods. Develop bright colour in flowers, fruits and vegetables

Dosage: 2.5 ml/1 liter of water

Net Qty: 250 ml | MRP: ₹ 1119

CONSISTENCY OFFER GETS BIGGER

After completing your **CONSISTENCY*** you can get an increased product voucher (as per T&C below), if you any invoice (Single/multiple) between 01th to 12th of every month.

***Minimum ₹ 2500 or ₹ 3000 or above mandatory

Terms & Conditions

Product voucher will be generated after the CNC cycle is completed

Only invoices generated with the value of ₹ 2500 or ₹ 3000 & above are considered for CNC benefits

Distributors are eligible for CNC benefits for the cycle of 4 months & 6 months respectively

The scheme is applicable with single & multiple invoices

This scheme is applicable for only Riwaglo distributors

Riwaglo holds the right to amend/extend/discontinue the scheme at anytime

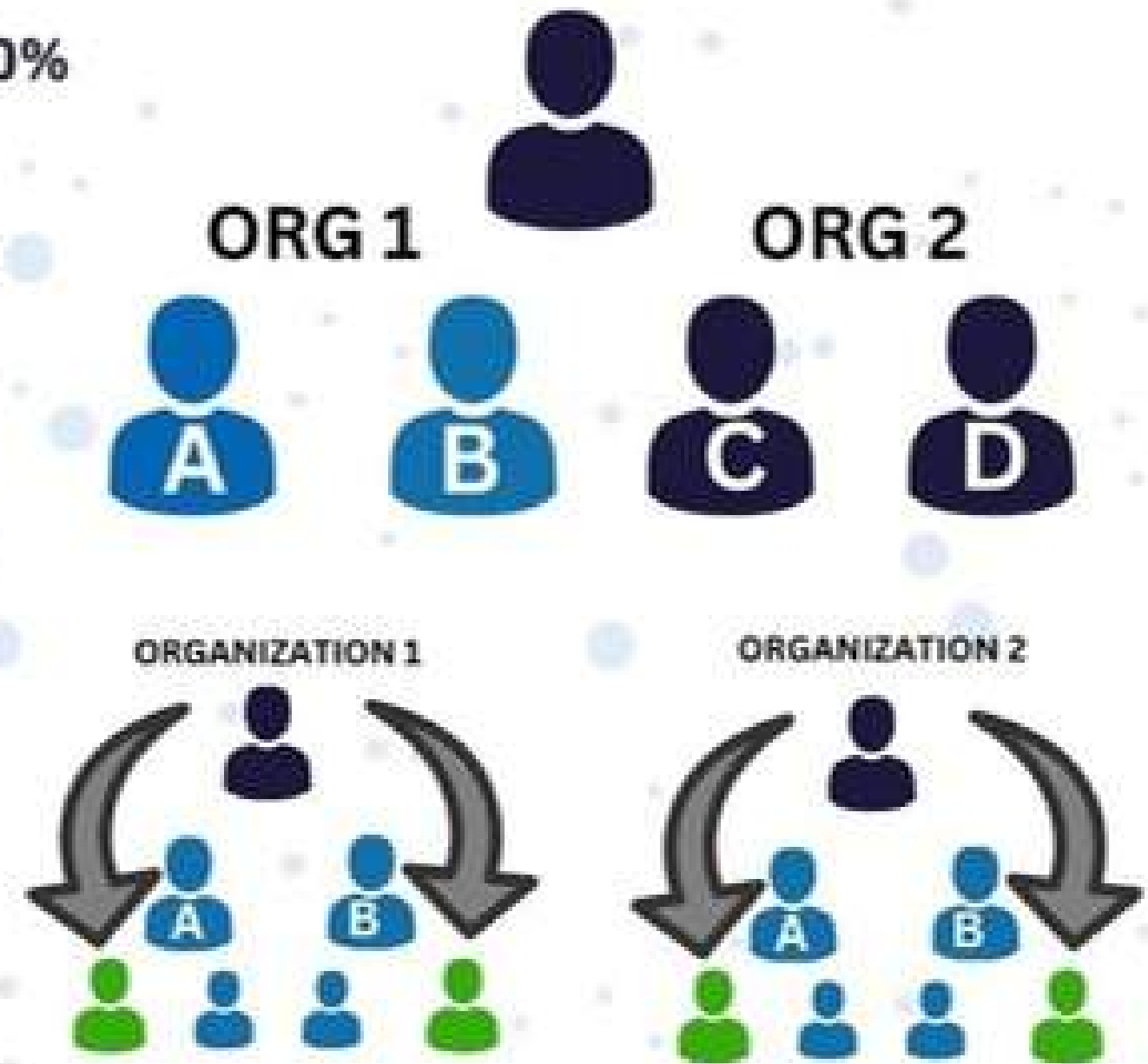
For any queries or feed back write to us at info@riwaglo.com or call us at 04049956999



Business Plan

Disclaimer: This information is provided for educational purposes only.
For the complete plan, please refer to the Riwaglo Business Plan.


- | | |
|------------------------|-------------|
| 1. Retail Profit | - Up to 30% |
| 2. Self Purchase Bonus | - 4% |
| 3. Riwa Referral Bonus | - 8-20% |
| 4. Team Building Bonus | - 15% |
| 5. Education Bonus | - 10% |
| 6. Leadership Bonus | - 20% |
| 7. House Fund | - 5% |
| 8. Travel Fund | - 4% |
| 9. Rank income | - 2% |
| 10. Annual Bonus | - 2% |
| 11. One Time Bonus | - 5% |



- | | |
|-------------------------|------------------------------------|
| 1. Bronze Director | - 2500Bv Matching |
| 2. Silver Director | - 10,000Bv Matching |
| 3. Gold Director | - 50,000Bv Matching |
| 4. Platinum Director | - 50k org1 -10kBv org2 Matching |
| 5. Emerald Director | - 1L Bv Matching |
| 6. Diamond Director | - 2.5L org1 - 25k Bv org2 Matching |
| 7. Royal Diamond | - 5L org1 - 50Bv org2 Matching |
| 8. Crown Director | - 8L org1 -1LBv org2 Matching |
| 9. Royal Crown Director | - 15L org1 -2.5L Bv or2 Matching |
| 10. Royal Blue Diamond | - 25L org1 - 5L Bv org2 Matching |
| 11. Ambassador | - 1cr org1 -50l Bv org2 Matching |

KEYPOINTS

1. CARRY FORWARD (T&C APPLY)
2. REFERRAL INCOME
3. UNLIMITED WEALTH GENERATION
4. ANNUAL BONUS
5. 4LUXURY CARS IN JOURNEY (OTB)
6. COMPANY PROUD MEMBER
7. RANK INCOME



ADVISORY & CAUTION

**Advisory*

These products are nutraceuticals. Not for medicinal use. These products are not intended to treat, diagnose, cure or prevent any disease. Please consult your medical practitioner, medical advisor before use. Please do not stop intake of any medicine while using nutraceuticals you might be consuming.

**Advisory*

These products are nutraceuticals. Not for medicinal use. These products are not intended to treat, diagnose, cure or prevent any disease. Please consult your medical practitioner, medical advisor before use. Please do not stop intake of any medicine while using nutraceuticals you might be consuming.

**Advisory*

These products are nutraceuticals. Not for medicinal use. These products are not intended to treat, diagnose, cure or prevent any disease. Please consult your medical practitioner, medical advisor before use. Please do not stop intake of any medicine while using nutraceuticals you might be consuming.





Riwaglo Marketing Pvt Ltd

4th Floor, RC Reddy Complex, Plot 39,
beside Uppal, Venkateswara Colony,
Beside Uppal Metro Station. Uppal

Contact Us

🌐 www.riwaglo.com

☎ 040 4995 6999

✉ info@riwaglo.com

📞 9059054427

📘 Riwaglo Marketing PVT LTD

📷 [riwaglo_official](https://www.instagram.com/riwaglo_official)

📺 RIWAGLO MARKETING PVT LTD